

**EXTENDO 1246<sup>X</sup>**

**PETTIBONE**

# 1246<sup>X</sup> **EXTENDO**

The Pettibone® Extendo 1246X is a true material handling workhorse, delivering an impressive maximum load capacity of 12,000 pounds. Equipped with efficient hydraulics that provide exceptional cycle times and controllability, the Extendo 1246X offers superior longevity and optimal performance on a wide array of applications.

**X-SERIES**



# SPECIFICATIONS



## DIMENSIONS

1	<b>Overall Height</b>	9' (274 cm) boom down
2	<b>Fork Carriage</b>	48" (122 cm) standard
3	<b>Ground Clearance</b>	19" (48 cm)
4	<b>Overall Length</b>	22' 11" (699 cm) to fork frame
	<b>Overall Width</b>	8' 6" (259 cm)
	<b>Pallet Forks</b>	2.25x4x48" standard
	<b>Approximate Operating Weight</b>	29,250 lbs (13,268 kg) without outriggers 30,750 lbs (13,948 kg) with outriggers

## ENGINE

<b>Model/Power</b>	120 HP (89.5 kW) Deutz® TCD 3.6 Tier 4 Final diesel with DEF and SCR aftertreatment
<b>DEF Tank</b>	5 gal. (19 L)
<b>Fuel Tank</b>	30 gal. (114 L)

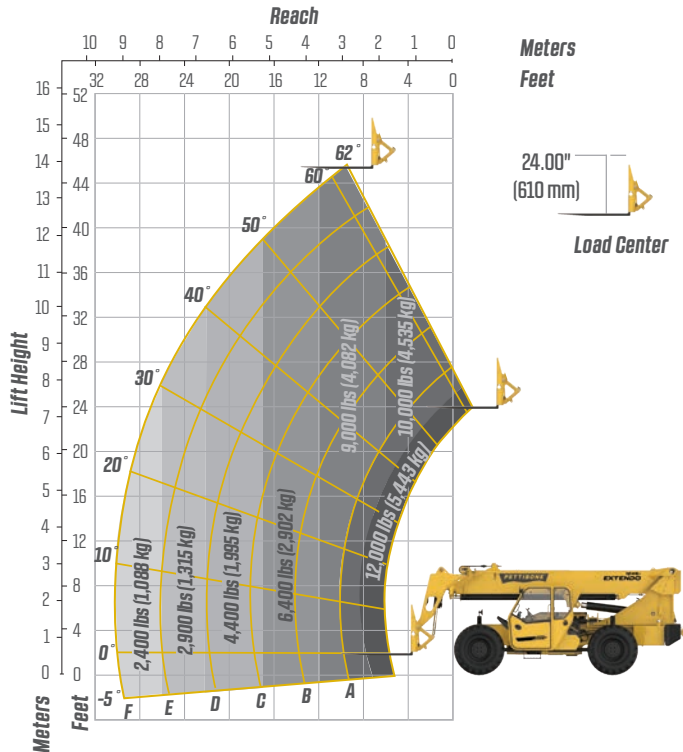
## HYDRAULICS

<b>System</b>	Pressure comp, axial piston pump
<b>Features</b>	Fully proportional functions, auxiliary boom tip hydraulics, quick disconnect for attachments
<b>Controls</b>	Single joystick, pilot operated

## PERFORMANCE

<b>Max Load Capacity</b>	12,000 lbs (5,443 kg)
<b>Maximum Lift Height</b>	46' 6" (1,417 cm)
<b>Landing Height</b>	42' (1,280 cm)
<b>Maximum Forward Reach</b>	30' (915 cm) at 24" LC
<b>Below Grade Reach</b>	3' 2" (97 cm)
<b>Maximum Travel Speed</b>	15.2 mph (24.5 km/h)
<b>Turning Radius</b>	14' 4" (437 cm)
<b>Drawbar Pull (GVW)</b>	28,600 lbs (12,973 kg)
<b>Frame</b>	20° of leveling (10° right and left), rear axle stabilization system
<b>Transmission</b>	Dana® VDT12000 Series, 3-speed Powershift, forward & reverse
<b>Axles</b>	Dana 223 Series: 4-wheel drive, 45% limited slip front differential
<b>Steering</b>	4 wheel, 2 wheel, and crab steer
<b>Brakes</b>	Oil-immersed inboard disc service brakes, integral front SAHR park brake
<b>Tires</b>	14.00 x 24, 16 ply, G2 tread air-fill standard
<b>Boom</b>	3-section, slide pad; automatic fork leveling without slave cylinder

# LIFT PERFORMANCE



# FEATURES & OPTIONS

## OPERATOR CAB

X-Command® telematics	Split door design
Adjustable suspension seat with seat belt	Flat, bolt-in glass
Single multifunction hydraulic joystick	Lockable storage area under seat
Analog/LCD gauge cluster	

## AVAILABLE ATTACHMENTS

Pallet, lumber or block forks	Standard carriage
Utility bucket	Hydraulic fork positioning carriage
Side tilt carriage (+/- 10°)	10' tower w/ standard carriage
Truss boom	

## OPTIONS

Premium gauge cluster w/7" digital display	Axle mounted outriggers
Rear-view camera system	Enclosed cab, HWD (A/C available)
High output LED lighting package	Sling hook
Solid or foam filled tires	Bolt-on rear pintle hitch
Various tire tread options available	

\* Specifications are subject to change.

**PETTIBONE®**

## PETTIBONE, LLC

1100 Superior Avenue  
Baraga, MI 49908

P: 906.379.4529  
info@gopettibone.com  
www.gopettibone.com

**2 - 5  
WARRANTY**

**2 Years/2,000 Hours** : Bumper-to-bumper  
**5 Years/5,000 Hours** : Machine structure

# WARRANTY