

EXTENDO 1256^X

PETTIBONE

1256^X **EXTENDO**

The Extendo™ 1256X takes rugged Pettibone® performance to another level, offering up to 12,000 pounds of lift capacity and a maximum lift height of 56 feet, 6 inches. Featuring a 4-section boom, standard outriggers and user-friendly hydraulic controls, the Extendo 1256X is the ultimate telehandler for tough jobsites.

X-SERIES



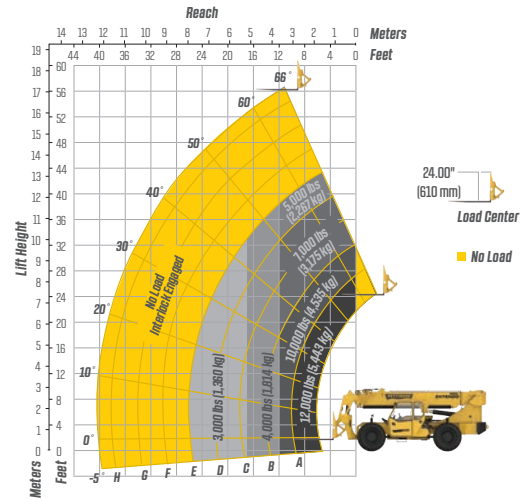
SPECIFICATIONS



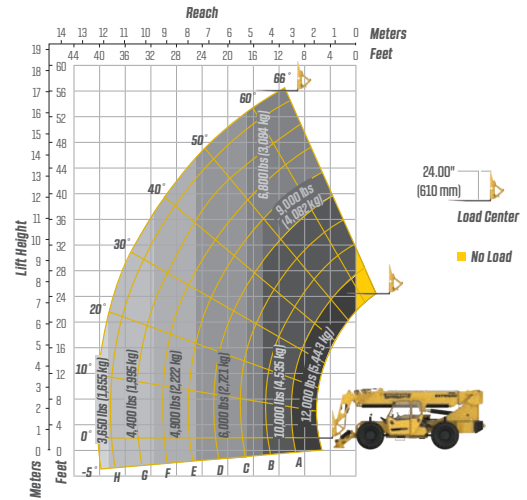
DIMENSIONS		
1	Overall Height	9' (274 cm) boom down
2	Fork Carriage	48" (122 cm) standard
3	Ground Clearance	19" (48 cm)
4	Overall Length	22' 11" (699 cm) to fork frame
	Overall Width	8' 6" (259 cm)
	Pallet Forks	2.25x4x48" standard
	Approximate Operating Weight	32,250 lbs (14,628 kg) with outriggers
ENGINE		
	Model/Power	120 HP (89.5 kW) Deutz® TCD 3.6 Tier 4 Final diesel with DEF and SCR aftertreatment
	DEF Tank	5 gal. (19 L)
	Fuel Tank	30 gal. (114 L)
HYDRAULICS		
	System	Pressure comp, axial piston pump
	Features	Fully proportional functions, auxiliary boom tip hydraulics, quick disconnect for attachments
	Controls	Single joystick, pilot operated
PERFORMANCE		
	Max Load Capacity	12,000 lbs (5,443 kg)
	Maximum Lift Height	56' 6" (1,722 cm)
	Landing Height	52' (1,585 cm)
	Maximum Forward Reach	40' (1,219 cm) at 24" LC
	Below Grade Reach	3' (91 cm)
	Maximum Travel Speed	15.2 mph (24.5 km/h)
	Turning Radius	14' 4" (437 cm)
	Drawbar Pull (GVW)	31,600 lbs (14,334 kg)
	Frame	20° of leveling (10° right and left), rear axle stabilization system
	Transmission	Dana® VDT12000 Series, 3-speed Powershift, forward & reverse
	Axles	Dana 223 Series: 4-wheel drive, 45% limited slip front differential
	Steering	4 wheel, 2 wheel, and crab steer
	Brakes	Oil-immersed inboard disc service brakes, integral front SAHR park brake
	Tires	14.00 x 24, 16 ply, G2 tread air-fill standard
	Boom	4-section, slide pad; automatic fork leveling without slave cylinder

LIFT PERFORMANCE

Standard Fork Frame (Outriggers Up)



Standard Fork Frame (Outriggers Down)



FEATURES & OPTIONS

OPERATOR CAB	
X-Command® telematics	Split door design
Adjustable suspension seat with seat belt	Flat, bolt-in glass
Single multifunction hydraulic joystick	Lockable storage area under seat
Analog/LCD gauge cluster	
AVAILABLE ATTACHMENTS	
Pallet, lumber or block forks	Standard carriage
Utility bucket	Hydraulic fork positioning carriage
Side tilt carriage (+/- 10°)	10' tower w/ standard carriage
Truss boom	
OPTIONS	
Premium gauge cluster w/7" digital display	Various tire tread options available
Rear-view camera system	Enclosed cab, HWD (A/C available)
High output LED lighting package	Sling hook
Solid or foam filled tires	Bolt-on rear pintle hitch

* Specifications are subject to change.

PETTIBONE®

PETTIBONE, LLC

1100 Superior Avenue
Baraga, MI 49908

P: 906.379.4529
info@gopettibone.com
www.gopettibone.com

**2 - 5
WARRANTY**

2 Years/2,000 Hours : Bumper-to-bumper
5 Years/5,000 Hours : Machine structure

WARRANTY