

EXTENDO 1544_X

PETTIBONE

1544_X **EXTENDO**

The Pettibone® Extendo 1544X provides a maximum lift capacity of 15,000 pounds and maximum lift height of 44 feet. Equipped with efficient hydraulics that provide exceptional controllability, the Extendo 1544X delivers enhanced lifting capabilities for highway construction, pipe yards and building sites.

X-SERIES

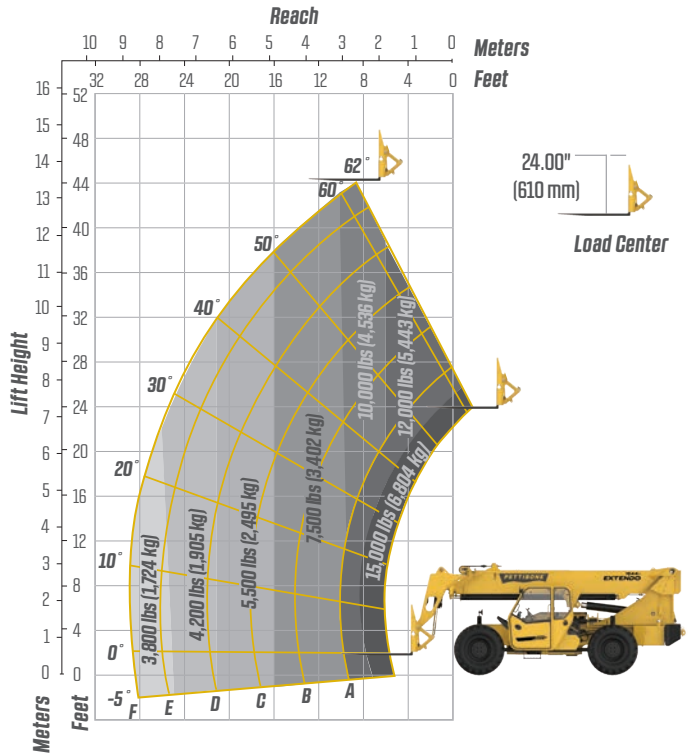


SPECIFICATIONS



DIMENSIONS		
1	Overall Height	9' (274 cm) boom down
2	Fork Carriage	48" (122 cm) standard
3	Ground Clearance	19" (48 cm)
4	Overall Length	22' 11" (699 cm) to fork frame
	Overall Width	8' 6" (259 cm)
	Pallet Forks	2.25x4x48" standard
	Approximate Operating Weight	32,050 lbs (14,538 kg) with foam-filled tires
ENGINE		
	Model/Power	120 HP (89.5 kW) Deutz® TCD 3.6 Tier 4 Final diesel with DEF and SCR aftertreatment
	DEF Tank	5 gal. (19 L)
	Fuel Tank	30 gal. (114 L)
HYDRAULICS		
	System	Pressure comp, axial piston pump
	Features	Fully proportional functions, auxiliary boom tip hydraulics, quick disconnect for attachments
	Controls	Single joystick, pilot operated
PERFORMANCE		
	Max Load Capacity	15,000 lbs (6,804 kg)
	Maximum Lift Height	44' (1,341 cm)
	Landing Height	41' (1,250 cm)
	Maximum Forward Reach	29' (884 cm) at 24" LC
	Below Grade Reach	3' (91 cm)
	Maximum Travel Speed	15.2 mph (24.5 km/h)
	Turning Radius	14' 4" (437 cm)
	Drawbar Pull (GVW)	28,600 lbs (12,973 kg)
	Frame	20° of leveling (10° right and left), rear axle stabilization system
	Transmission	Dana® VDT12000 Series, 3-speed Powershift, forward & reverse
	Axles	Dana 223 Series: 4-wheel drive, 45% limited slip front differential
	Steering	4 wheel, 2 wheel, and crab steer
	Brakes	Oil-immersed inboard disc service brakes, integral front SAHR park brake
	Tires	14.00 x 24, 16 ply, G2 tread foam standard
	Boom	3-section, slide pad; automatic fork leveling without slave cylinder

LIFT PERFORMANCE



FEATURES & OPTIONS

OPERATOR CAB

X-Command® telematics
Adjustable suspension seat with seat belt
Single multifunction hydraulic joystick
Analog/LCD gauge cluster

Split door design
Flat, bolt-in glass
Lockable storage area under seat

AVAILABLE ATTACHMENTS

Pallet, lumber or block forks
Utility bucket
Side tilt carriage (+/- 10°)
Truss boom

Standard carriage
Hydraulic fork positioning carriage
Pipe and pole baler

OPTIONS

Premium gauge cluster w/7" digital display
Rear-view camera system
High output LED lighting package
Solid tires

Various tire tread options available
Enclosed cab, HWD (A/C available)
Sling hook
Bolt-on rear pintle hitch

* Specifications are subject to change.

PETTIBONE®

PETTIBONE, LLC

1100 Superior Avenue
Baraga, MI 49908

P: 906.379.4529
info@gopettibone.com
www.gopettibone.com

**2 - 5
WARRANTY**

2 Years/2,000 Hours : Bumper-to-bumper
5 Years/5,000 Hours : Machine structure

WARRANTY