

**TRAVERSE T1246X**

**PETTIBONE**

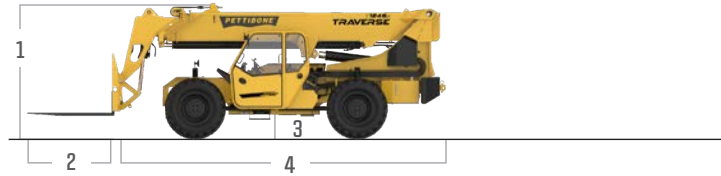
# T1246X TRAVERSE

The Pettibone® Traverse™ T1246X features an industry-exclusive extendable, traversing boom that moves loads by traveling horizontally. Providing up to 70 inches of horizontal boom transfer, the Traverse allows users to precisely place loads at full lift height without having to coordinate multiple boom functions.

**X-SERIES**

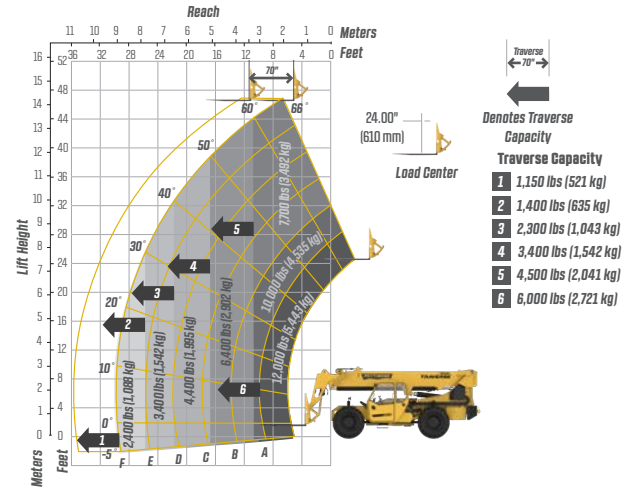


# SPECIFICATIONS



DIMENSIONS		
1	<b>Overall Height</b>	9' (274 cm) boom down
2	<b>Fork Carriage</b>	48" (122 cm) standard
3	<b>Ground Clearance</b>	19" (48 cm)
4	<b>Overall Length</b>	22' 11" (699 cm) to fork frame
	<b>Overall Width</b>	8' 6" (259 cm)
	<b>Pallet Forks</b>	2.25x4x48" standard
	<b>Approximate Operating Weight</b>	29,750 lbs (13,494 kg) without outriggers 31,250 lbs (14,175 kg) with optional outriggers
ENGINE		
	<b>Model/Power</b>	120 HP (89.5 kW) Deutz® TCD 3.6 Tier 4 Final diesel with DEF and SCR aftertreatment
	<b>DEF Tank</b>	5 gal. (19 L)
	<b>Fuel Tank</b>	30 gal. (114 L)
HYDRAULICS		
	<b>System</b>	Pressure comp, axial piston pump
	<b>Features</b>	Fully proportional functions, auxiliary boom tip hydraulics, quick disconnect for attachments
	<b>Controls</b>	Single joystick, pilot operated
PERFORMANCE		
	<b>Max Load Capacity</b>	12,000 lbs (5,443 kg)
	<b>Maximum Lift Height</b>	46' 6" (1,417 cm)
	<b>Landing Height</b>	46' 6" (1,417 cm)
	<b>Maximum Forward Reach</b>	35' 10" (1,092 cm) at 24" LC 30' (914 cm) non-traversed
	<b>Below Grade Reach</b>	3' 2" (97 cm)
	<b>Maximum Travel Speed</b>	15.2 mph (24.5 km/h)
	<b>Turning Radius</b>	14' 4" (437 cm)
	<b>Drawbar Pull (GVW)</b>	29,100 lbs (13,200 kg)
	<b>Frame</b>	20° of leveling (10° right and left), rear axle stabilization system
	<b>Transmission</b>	Dana® VDT12000 Series, 3-speed Powershift, forward & reverse
	<b>Axles</b>	Dana 223 Series: 4-wheel drive, 45% limited slip front differential
	<b>Steering</b>	4 wheel, 2 wheel, and crab steer
	<b>Brakes</b>	Oil-immersed inboard disc service brakes, integral front SAHR park brake
	<b>Tires</b>	14.00 x 24, 16 ply, G2 tread air-fill standard
	<b>Boom</b>	3-section, slide pad; automatic fork leveling without slave cylinder

# LIFT PERFORMANCE



# FEATURES & OPTIONS

OPERATOR CAB	
X-Command® telematics Adjustable suspension seat with seat belt Single multifunction hydraulic joystick Analog/LCD gauge cluster	Split door design Flat, bolt-in glass Lockable storage area under seat
AVAILABLE ATTACHMENTS	
Pallet, lumber or block forks Utility bucket Side tilt carriage (+/- 10°) Truss boom	Standard carriage Hydraulic fork positioning carriage 10' tower w/ standard carriage
OPTIONS	
Premium gauge cluster w/7" digital display Rear-view camera system High output LED lighting package Solid or foam filled tires Various tire tread options available	Enclosed cab, HWD (A/C available) Sling hook Bolt-on rear pintle hitch Axle-mounted outriggers

\* Specifications are subject to change.



**PETTIBONE, LLC**  
1100 Superior Avenue  
Baraga, MI 49908  
  
P: 906.379.4529  
info@gopettibone.com  
www.gopettibone.com



**2 Years/2,000 Hours** : Bumper-to-bumper  
**5 Years/5,000 Hours** : Machine structure

# WARRANTY