

TRAVERSE T1256X

PETTIBONE

T1256X TRAVERSE

The Traverse™ T1256X is the farthest-reaching telehandler in the Pettibone® lineup. Featuring a unique traversing boom that moves loads by traveling horizontally, the Traverse provides up to 70 inches of horizontal boom transfer, allowing users to precisely place loads at full lift height without having to coordinate multiple boom functions.

X-SERIES



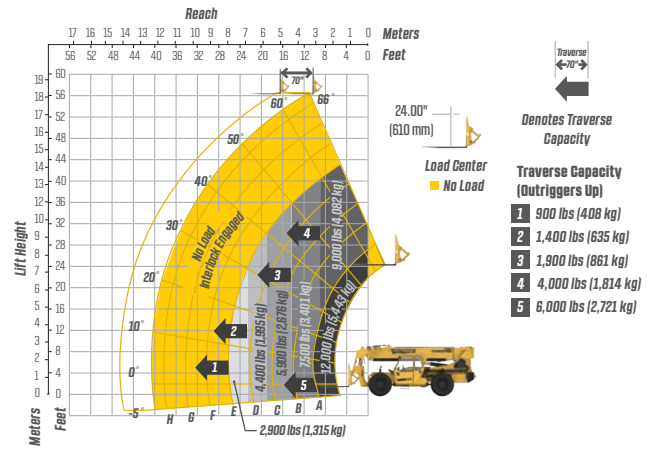
SPECIFICATIONS



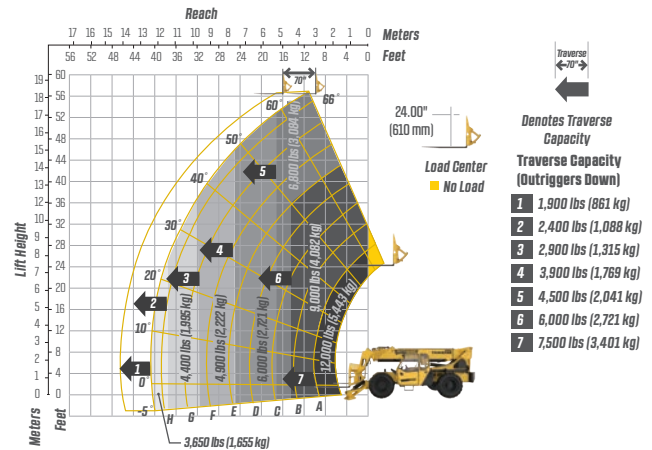
DIMENSIONS		
1	Overall Height	9' (274 cm) boom down
2	Fork Carriage	48" (122 cm) standard
3	Ground Clearance	19" (48 cm)
4	Overall Length	22' 11" (699 cm) to fork frame
	Overall Width	8' 6" (259 cm)
	Pallet Forks	2.25x4x48" standard
	Approximate Operating Weight	32,500 lbs (14,742 kg) with outriggers
ENGINE		
	Model/Power	120 HP (89.5 kW) Deutz® TCD 3.6 Tier 4 Final diesel with DEF and SCR aftertreatment
	DEF Tank	5 gal. (19 L)
	Fuel Tank	30 gal. (114 L)
HYDRAULICS		
	System	Pressure comp, axial piston pump
	Features	Fully proportional functions, auxiliary boom tip hydraulics, quick disconnect for attachments
	Controls	Single joystick, pilot operated
PERFORMANCE		
	Max Load Capacity	12,000 lbs (5,443 kg)
	Maximum Lift Height	56' 6" (1,722 cm)
	Landing Height	56' 6" (1,722 cm)
	Maximum Forward Reach	45' 10" (1,397 cm) traversed 40' (1,219 cm) non-traversed
	Below Grade Reach	3' (91 cm)
	Maximum Travel Speed	15.2 mph (24.5 km/h)
	Turning Radius	14' 4" (437 cm)
	Drawbar Pull (GVW)	31,800 lbs (14,424 kg)
	Frame	20° of leveling (10° right and left), rear axle stabilization system
	Transmission	Dana® VDT12000 Series, 3-speed Powershift, forward & reverse
	Axles	Dana 223 Series: 4-wheel drive, 45% limited slip front differential
	Steering	4 wheel, 2 wheel, and crab steer
	Brakes	Oil-immersed inboard disc service brakes, integral front SAHR park brake
	Tires	14.00 x 24, 16 ply, G2 tread air-fill standard
	Boom	4-section, slide pad; automatic fork leveling without slave cylinder

LIFT PERFORMANCE

Standard Fork Frame (Outriggers Up)



Standard Fork Frame (Outriggers Down)



FEATURES & OPTIONS

OPERATOR CAB

X-Command® telematics Adjustable suspension seat with seat belt Single multifunction hydraulic joystick Analog/LCD gauge cluster	Split door design Flat, bolt-in glass Lockable storage area under seat
---	--

AVAILABLE ATTACHMENTS

Pallet, lumber or block forks Utility bucket Side tilt carriage (+/- 10°) Truss boom	Standard carriage Hydraulic fork positioning carriage 10' tower w/ standard carriage
---	--

OPTIONS

Premium gauge cluster w/7" digital display Rear-view camera system High output LED lighting package Solid or foam filled tires	Various tire tread options available Enclosed cab, HWD (A/C available) Sling hook Bolt-on rear pintle hitch
---	--

* Specifications are subject to change.

PETTIBONE®

PETTIBONE, LLC
1100 Superior Avenue
Baraga, MI 49908

P: 906.379.4529
info@gopettibone.com
www.gopettibone.com

**2 - 5
WARRANTY**

2 Years/2,000 Hours : Bumper-to-bumper
5 Years/5,000 Hours : Machine structure

WARRANTY